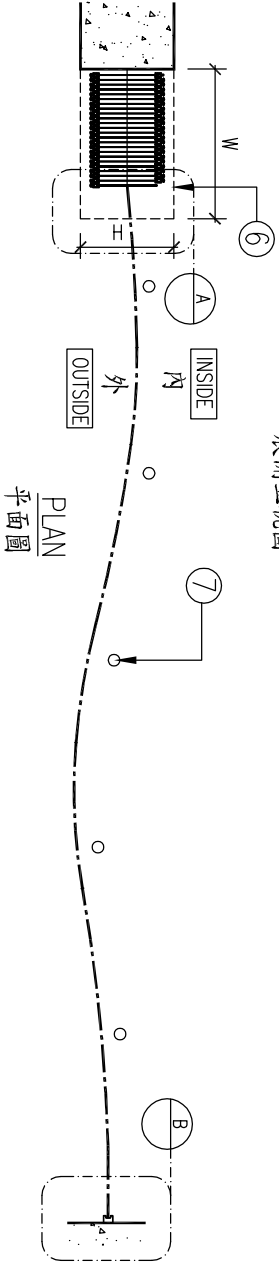
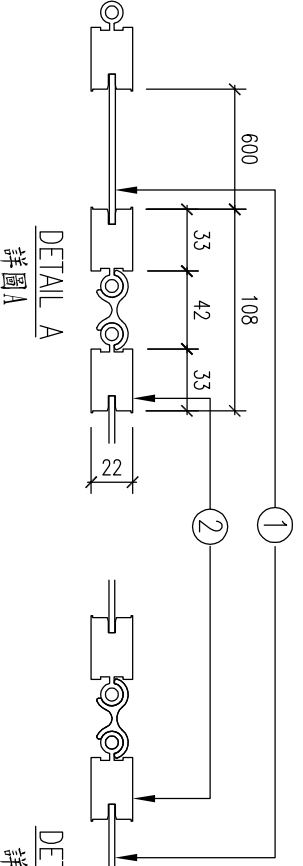


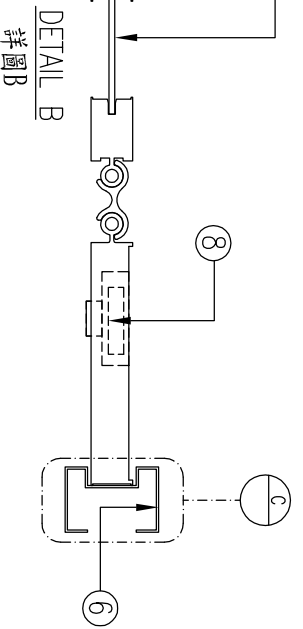
展開立視圖



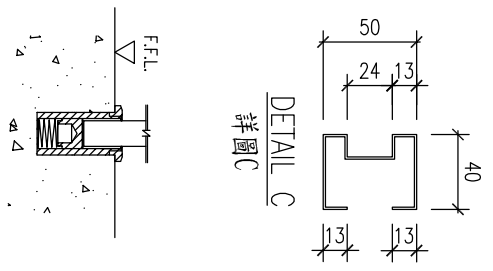
PLAN
平面圖



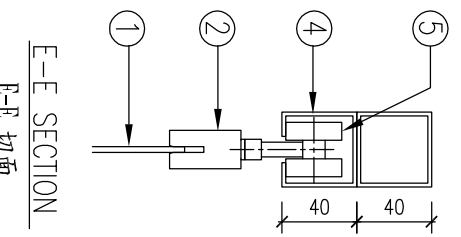
DETAIL A
詳圖A



DETAIL B
詳圖B

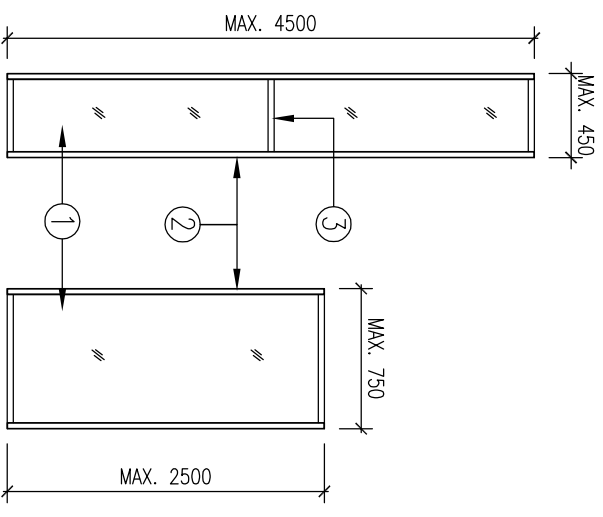


DETAIL C
詳圖C

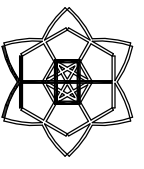


E-E SECTION
D-D 切面

- | | |
|--|---|
| 1. 3mm THK SHEET
a. POLYCARBONATE
b. WIRE GLASS
c. TEMPERED GLASS | 1. 3mm厚片
a. 聚碳酸酯
b. 鋼線玻璃
c. 玻璃 |
| 2. ALUM. DOOR FRAME | 2. 鋁型材門框 |
| 3. ALUM. DOOR TRANSOM (OVER 2500 HEIGHT) | 3. 鋁型材門楣 |
| 4. TOP TRACK | 4. 導軌 |
| 5. ROLLER | 5. 滾軸 |
| 6. DOOR ENCLOSURE | 6. 接收槽 |
| 7. FLOOR SOCKET WITH SPRING RETURN DUST COVER | 7. 地插連防塵罩 |
| 8. LOCKING DEVICE | 8. 門鎖 |



DETAIL F
詳圖F



CHUNG TAI
ROLLER SHUTTERS CO. LTD.
UNIT 7, G/F, KIN FAT INDUSTRIAL CENTRE,
KIN FAT ST., TUEN MUN, N.T.
TEL: +852 2465 9323
FAX: +852 2456 1364
E-mail: info@chungtai-rs.com.hk

DRAWING NO. : Flding Door

DRAWING TITLE :

COMPONENTS OF ALUM. FRAME & POLYCARBONATE /GLASS LEAF FOLDING DOOR
鋁型材門框聚碳酸酯/玻璃門頁摺門